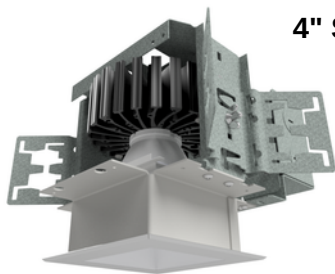


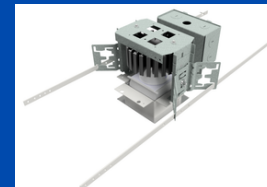
## 4" SQUARE APERTURE DIRECT TUNABLE WHITE DOWNLIGHT



PERFORMANCE CHARACTERISTICS			
DISTRIBUTION: 100% DOWN / 0% UP			
FIXTURE EFFICIENCY: N=90%, M=90% W=89%			
LUMEN	2700	6500	WATTS
07	675	742	5.8
10	1000	1100	9.6
14	1400	1540	13.5
22	2250	2475	23.1
30	3000	3300	30.8

NOTE: WATTAGE IS LED WATTAGE ONLY FOR COMPARISON PURPOSES. FOR FIXTURE WATTAGE ADD 10% TO ACCOUNT FOR DRIVER LOSS.

### AVAILABLE MOUNTING STYLES



NEW CONSTRUCTION

## FEATURES

Tunable white 2700K - 6500K - 90CRI output • Output up to 3,000 lumens at 2700K • CRI values 90+ through entire tunable range • Multiple reflector color options • Dimming option down to as low as 0.1% • LED driver and LED module accessible from below ceiling

## SPECS

Narrow, Medium, Wide and Spot beam spread options available via interchangeable upper optic reflector • Low iridescent Alzak® reflector • Capable of mounting in a 2" thick ceiling • 18 ga galvanized junction box suitable for through wiring (4in/4out) #12 AWG • Fixture should be installed in applications where ambient temperatures do not exceed 50°C • Fixtures are cETLus listed for damp location, wet location optional.

## ORDERING INFORMATION

FIXTURE TYPE:

PROJECT:

SERIES: **4LESQ-AWT**

ORDER CODE:

1. LUMEN	3. BEAM SPREAD	4. DRIVER	5. VOLTAGE
<p>07 - 675 10 - 1000 14 - 1400 22 - 2250 30 - 3000</p> <p><i>NOMINAL WHEN OUTPUT AT 2700K</i></p> <p><i>SEE PAGE 2 FOR OUTPUT ADJUSTMENTS AT OTHER COLOR TEMPERATURES</i></p>	<p>S - SPOT (14° BEAM) N - NARROW (25° BEAM) M - MEDIUM (40° BEAM) W - WIDE (60° BEAM)</p>	<p>DD - 2 PAIRS OF 0-10V INPUT A) DIMMING TO .1% B) CCT ADJUSTMENT DA - DALI T - LUTRON SERIES "T"</p>	<p>1 - 120V 2 - 277V 3 - 347V*</p> <p><i>** 347V USES AN ON-BOARD STEP DOWN TRANSFORMER</i></p>
2. MOUNTING:			
N - NEW CONSTRUCTION			
6. REFLECTOR COLOR	7. REFLECTOR OPTIONS	8. EMERGENCY	9. OPTIONS:
<p>H - HAZE B - BLACK PAINT W - WHITE PAINT CA - CUSTOM COLORS (CONSULT FACTORY)</p>	<p>WLW - WALLWASH SOL - PATTERNED TEMPERED GLASS TRM - FLANGELESS</p>	<p>1 - SINGLE - INTEGRAL</p>	<p>W - WET LOCATION (REQUIRES "SOL" OPTION)</p>

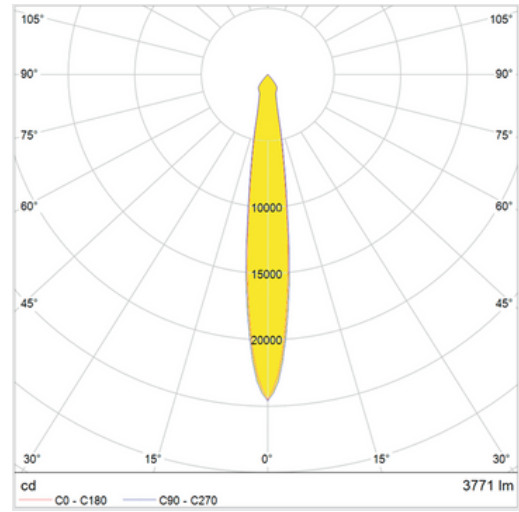
SEE 4LESQ-ACT FOR FULL COLOR TUNABLE OUTPUT  
SEE 4LESQ-XL2 AND 4LESQ-MX3 FOR FIXED CCT OUTPUT



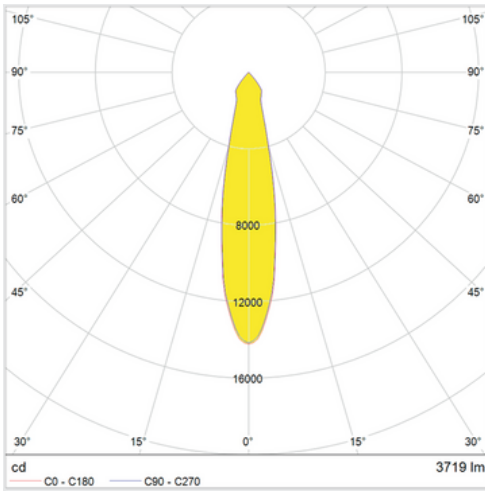
## LUMEN OUTPUT ADJUSTMENTS BY COLOR TEMPERATURE

2700K	100%
3000K	103%
3500K	109%
4000K	114%
5000K	114%
6500K	110%

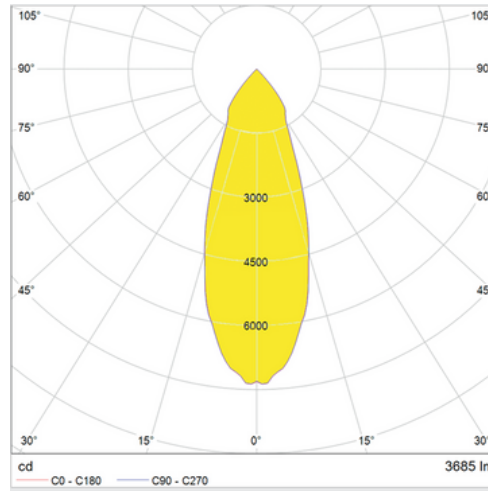
### 14° CURVE



### 25° CURVE



### 40° CURVE



### 60° CURVE

